

BRUKS® Rockwood OCR Stacker Reclaimer

FEATURES

Operation

Automated

Storage Capacity

Medium

Stacking Capacity

Medium

Maintenance Requirements

Low

Civil Requirements

Minimal

Dust Emissions

Minimized with Luffing Option.

Live Storage

100% Live

BULK MATERIALS

Baggasse

Bauxite

Coal

Grain

Gypsum

Iron Ore

Kaolin

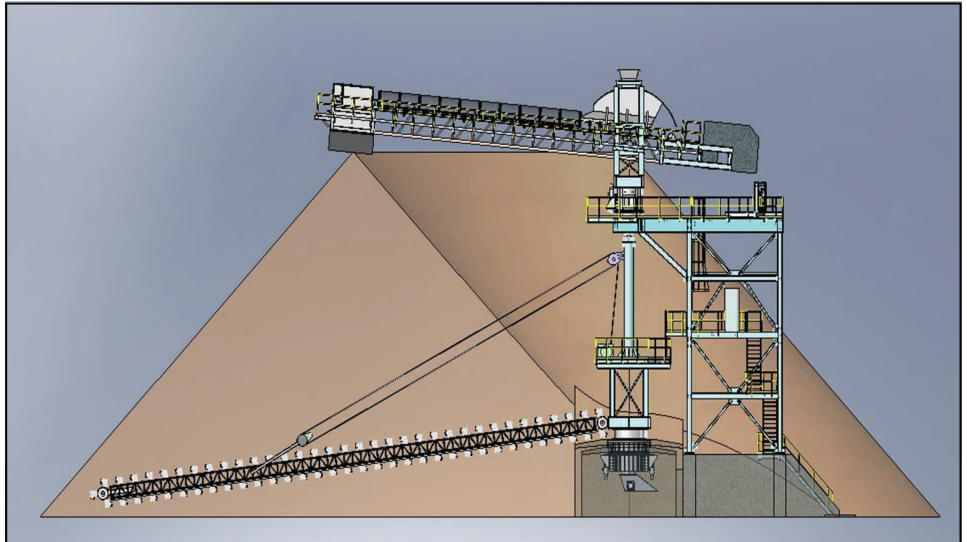
Limestone

Petroleum Coke

Sulpher Prill

Wood Waste

Wood Chips



BRUKS Rockwood's The Overpile Chain Reclaim, OCR Product Line provides an excellent method for Fully Automated Storage and Reclaim of many bulk materials. The OCR was developed by BRUKS Rockwood as a cost effective method of handling smaller storage volumes. It is especially well suited for Bio Fuels used for Bio Fuel Energy Plants, Cellulosic Based Ethanol Plants and Pellet Production Plants.

The OCR combines in one machine Fully Automated Stacking and Fully Automated Reclaiming. Operation of the OCR is performed remotely. The OCR includes an operator and MCC station with PLC controls mounted on the stacker support structure. The Stacker and the Reclaimer can be controlled separately from different remote locations or DCS's.

Total Live Storage is achieved with the OCR. 100% of the material stacked under the OCR is accessible by the automated reclaimer requiring no mobile equipment or labor.

Dust and particulate emissions are minimized through the stacker luffing design. This allows the stacker to lower the boom discharge chute to its lowest point before beginning stack out. The boom then automatically raises in small pre-set increments as the storage pile makes contact with the boom/pile limit switches.

BRUKS®
Rockwood

The BRUKS Group

BRUKS AB • **BRUKS Rotom** • **BRUKS Rockwood Inc** • **BRUKS Klockner GmbH** • **BRUKS Celtec**

BRUKS Rockwood • 5975 Shiloh Rd. • Suite 109 • Alpharetta Georgia • 30005 USA

Telephone: + 1 (770) 849-0100 • Telefax: + 1 (770) 495-7195 • marketing@rockwood.net • www.rockwood.net

BRUKS Rockwood, **West Coast Office** • 209 Avenue D • Snohomish, WA • 98290 • (360) 863-2947 • des@bruks.com

